

# MEMORANDUM

## State of Alaska Department of Fish and Game HABITAT SECTION

TO: Kate Kanouse  
Southeast Regional Supervisor

DATE: January 10, 2024

THRU: Jesse Lindgren *JL*  
Habitat Biologist

FILE: Gastineau Channel Bridge: DOT  
Second Crossing

FROM: Flynn Casey *FFC*  
Habitat Biologist

SUBJECT: Juneau-Douglas Second Crossing  
Fish Stream Surveys  
#SFHWY00299

PHONE NO: (907) 465-4287

Between October 19 and October 31, 2023, I surveyed streams near the proposed preliminary alternatives identified in the Alaska Department of Transportation and Public Facilities Juneau-Douglas second crossing planning and environmental linkages study (PEL; Figure 1; State Project #SFHWY00299). I surveyed all streams for fish presence using a backpack electrofisher and baited minnow traps, resulting in 20 nominations to the anadromous waters catalog (AWC; Table 1). Level 1 screening of the PEL study was completed in 2023, advancing the Mendenhall Peninsula, West Sunny Point area, Vanderbilt, Twin Lakes, and Salmon Creek alternatives to level 2 screening. Appendix A.1 (west) and A.2 (east) documents fish presence within the project area, identifying streams specified in the 2023 AWC, additions pending acceptance to the AWC, supporting resident fish, and conveyance with no fish observed. All new additions to the AWC were made based on the finding of rearing juvenile coho salmon.

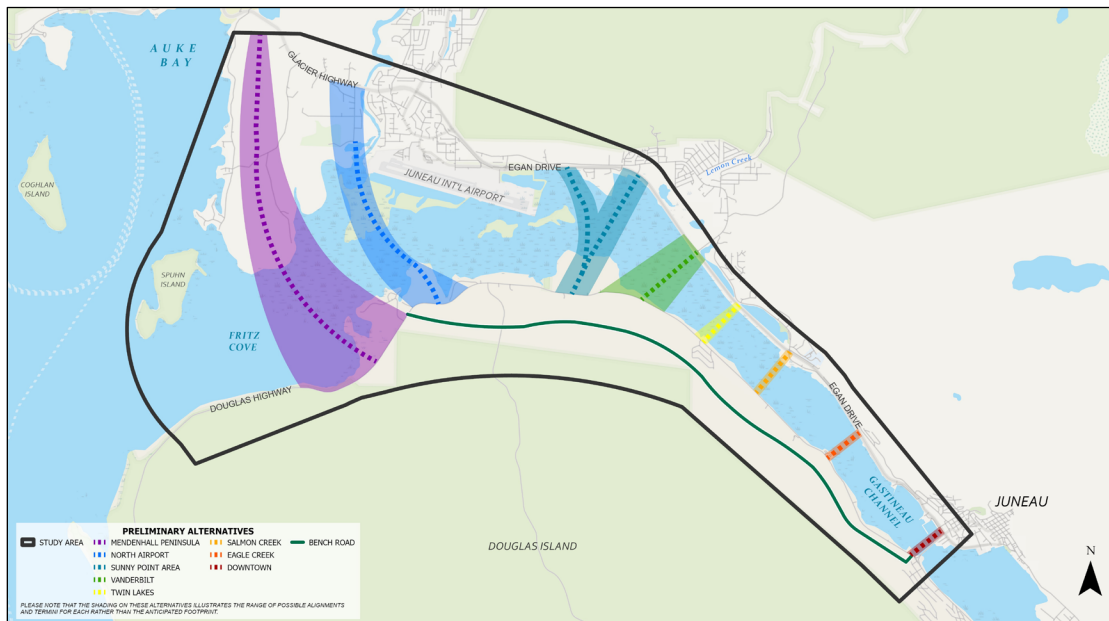


Figure 1.—Preliminary alternatives dated January 03, 2023.

Table 1.–Nominations submitted to the AWC (attached).

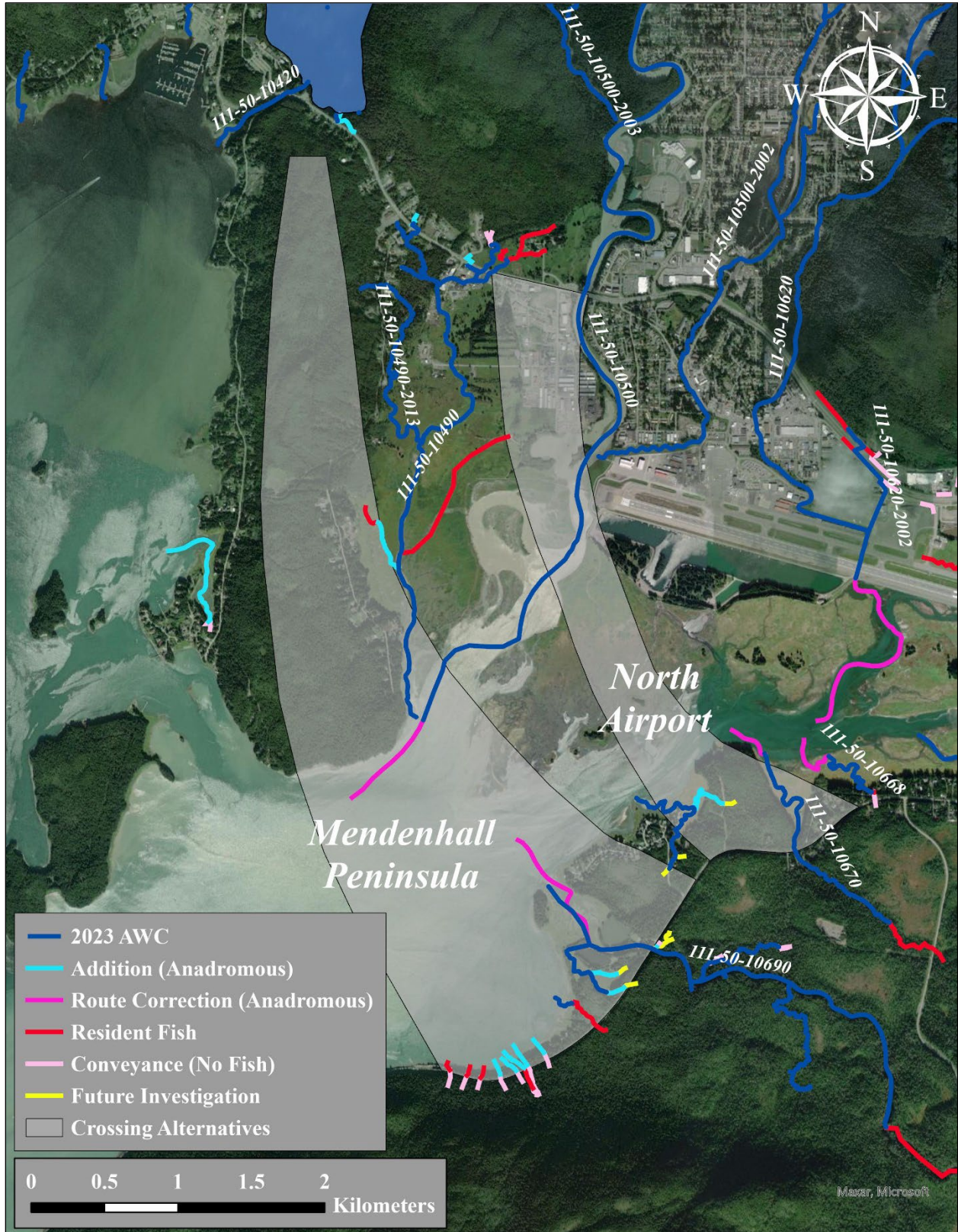
Nomination #	Nomination
24-509	111-50-10490 Tributary 1 Addition
24-510	Fritz Cove Uncataloged Stream Addition
24-511	111-50-10620 Route Correction
24-512	111-40-10100 Route Correction
24-513	111-40-10070 Route Correction
24-514	111-50-10658 Addition
24-515	111-50-10668 Route Correction
24-516	111-50-10680 Tributary 1 Addition
24-517	111-50-10690 Tributary 1 Addition
24-518	111-50-10690-2000 Addition
24-519	111-50-10690-2000 Tributary 1 Addition
24-520	Gastineau Channel Uncataloged Stream Addition 1
24-521	Gastineau Channel Uncataloged Stream Addition 2
24-522	Gastineau Channel Uncataloged Stream Addition 3
24-523	Gastineau Channel Uncataloged Stream Addition 4
24-524	Gastineau Channel Uncataloged Stream Addition 5
24-525	Gastineau Channel Uncataloged Stream Addition 6
24-528	111-50-10690 Route Correction
24-529	111-50-10670 Route Correction
24-530	111-50-10500 Route Correction

Attachments: Appendix A: Second Crossing preliminary alternatives fish use map  
AWC Nominations 24-509 through 24-525, and 24-528 through 24-530

Email cc:

Al Ott, ADF&G Habitat, Fairbanks  
ADF&G Habitat Staff, Douglas  
Dan Teske, ADF&G SF, Douglas  
Scott Forbes, ADF&G CF, Douglas  
Roy Churchwell, ADF&G WC, Douglas  
Sue Rodman, ADF&G WC, Anchorage  
Greg Lockwood, ADOT&PF, Juneau  
Ben Storey, ADOT&PF, Juneau  
Morgan McCammon, DOWL  
Margaret Custer, MWSGR AC, Juneau  
Teri Camery, CBJ, Juneau  
Mike Salyer, USACE, Soldotna  
Andy Stevens, USFWS, Anchorage  
Habitat Conservation Division, NMFS, Juneau

Appendix A.1.—Second Crossing preliminary alternatives fish use map (West).



Appendix A.2.–Second Crossing preliminary alternatives fish use map (East).

